

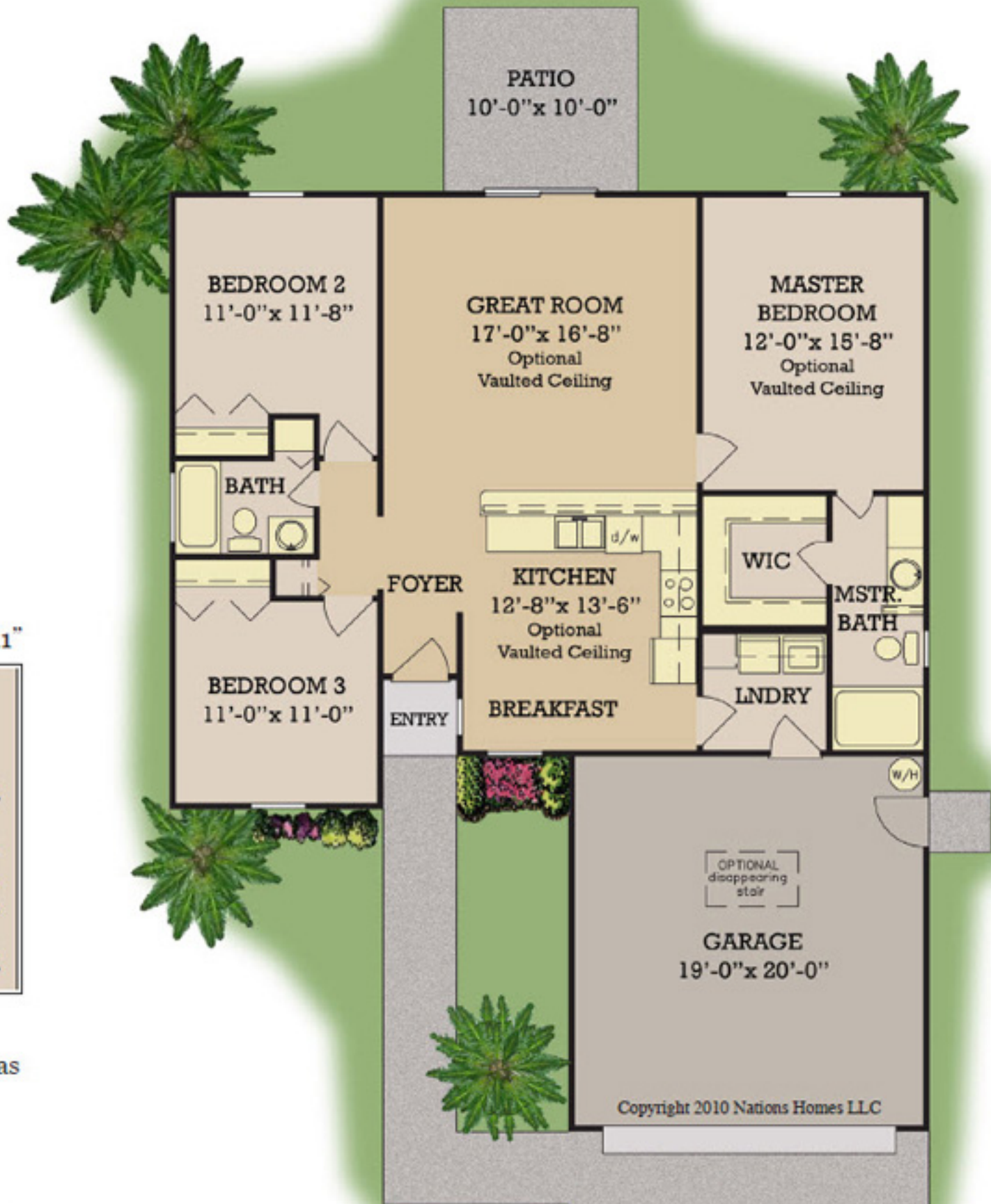


Shown with optional brick

# THE BAYHILL I

O. D. 41'-3" x 50'-11"

<b>BAYHILL I</b>	
3 Bedrooms, 2 Baths	
Total Heated Area.....	1,270 SQ FT.
Garage.....	400 SQ FT.
Entry.....	20 SQ FT.
Total Covered Area.....	1,690 SQ FT.
Patio.....	100 SQ FT.



All dimensions and areas are approximate