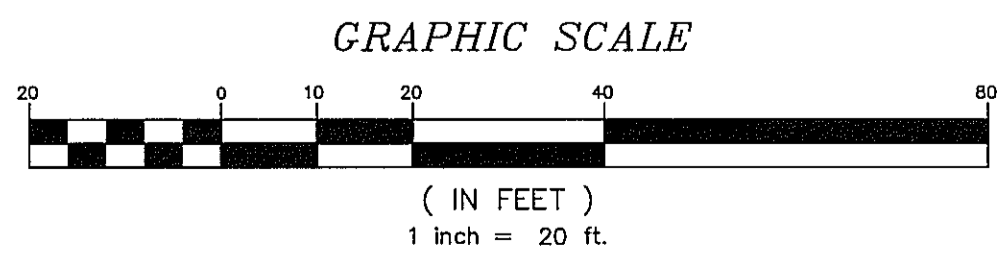
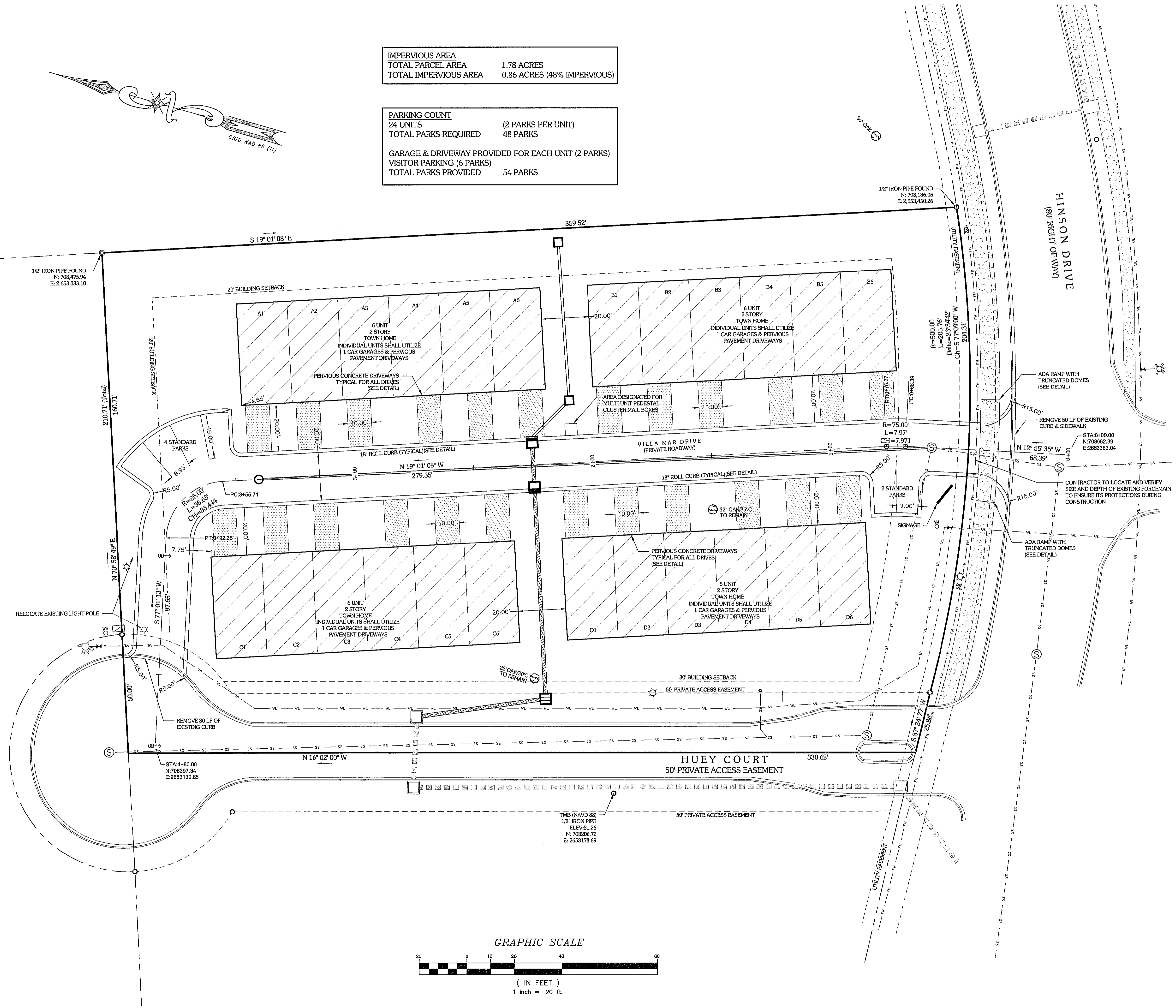


LEGEND	
	PALMETTO PALM
	OAK OAK
	IRON PIPE FOUND
	IRON PIPE SET
	LIGHT POLE
	HYDRANT
	VALVE
	VALVE MARKER
	WATER SERVICE
	SEWER CLEANOUT
	TRANSFORMER

IMPERVIOUS AREA  
 TOTAL PARCEL AREA 1.78 ACRES  
 TOTAL IMPERVIOUS AREA 0.86 ACRES (48% IMPERVIOUS)

PARKING COUNT  
 24 UNITS (2 PARKS PER UNIT)  
 TOTAL PARKS REQUIRED 48 PARKS  
 GARAGE & DRIVEWAY PROVIDED FOR EACH UNIT (2 PARKS)  
 VISITOR PARKING (6 PARKS)  
 TOTAL PARKS PROVIDED 54 PARKS



ENGINEERING / PLANNING  
 LAND SURVEYING  
 3901 N. Kings Hwy., Ste. 22A  
 Myrtle Beach, SC 29577  
 Telephone: 843.448.0910  
 Fax: 843.448.0969  
 www.castlesengineering.com

**Castles**  
 Engineering

**SITE PLAN**  
 for  
**TOWN CENTER TOWNHOMES**  
 NATIONS HOMES  
 Horry County, South Carolina

SCALE: 1"=20'  
 DESIGNED BY: PTH  
 DRAWN BY: PTH  
 CHECKED BY: RLC  
 DATE ISSUED: 05-20-14

Number	Date	Revisions

SOUTH CAROLINA  
 CASTLES CONSULTING ENGINEERS, INC.  
 No. 000850  
 STATE OF SOUTH CAROLINA

SOUTH CAROLINA  
 REGISTERED PROFESSIONAL ENGINEER  
 No. 8628  
 TOMER L. CASTLES

SHEET NUMBER:  
**C3**  
 PROJECT#: 13065