



PINE LAKES ESTATES



NATIONS★HOMES II
Building the American Dream

MYRTLE BEACH, SOUTH CAROLINA
PHONE: 843-449-8900 FAX: 843-497-5325
WWW.NATIONS-HOMES.COM

OUR STORY

NATIONS HOMES II has earned a reputation as one of the finest builders in the Carolinas. Industry peers and satisfied customers applaud a record of excellence that includes a full range of custom homes from first time home buyers to multi-million dollar estates.

Those who choose NATIONS HOMES II will quickly understand why the company's name has become synonymous with uncompromising customer service and outstanding value. National contracts with major suppliers and volume discounts with local subcontractors allow our pricing structure to be well below the market.

NATIONS HOMES II takes pride in our extraordinary staff of professionals. These experts will guide you through every stage of the home building process. Our design team works with each homeowner to create the most livable and appealing floor plans to fit their lifestyle and budget using the latest computer technology. Experienced construction managers and supervisors are on site at your new address every day making sure a multitude of details are handled appropriately. All this experience and personalized service means you can sit back, relax and finalize your moving plans.

The decision to make NATIONS HOMES II your home building team could be one of the most important decisions you will ever make. In experience, expertise and reputation, we give buyers long term value and simple peace of mind.

NATIONS HOMES II was founded by Jeff Skelley in Myrtle Beach, South Carolina. He has over 25 years of home building experience in the Grand Strand which includes:

- ★ Co-owning and operating the largest private homebuilding company in South Carolina.
- ★ Co-operating one of the largest divisions of a public building company ranked as the 16th largest home builder in the nation.
- ★ Constructing as many as 400+ homes per year with gross sales in excess of \$40 million.
- ★ Voted Custom Home Builder of the Year by readers of the Myrtle Beach Herald.

"We are committed to grow Nations Homes II reputation as one of the most sought after custom homebuilders in the Grand Strand, providing our home-owners with dedicated customer service and the best values for their hard earned money."

Jeff Skelley, President Nations Homes II



PINE LAKES ESTATES PRICE LIST

<u>Plan</u>	<u>Heated Square Foot</u>
Marion w/ Bonus Room w/out Screened Porch	2075
Brookstone w/ Bonus Room	2204
Inverness	2000
Inverness w/ Bonus Room	2337
Myrtle	2040
Myrtle w/ Bonus Room	2315
Georgetown	2488
Manchester	2373
Manchester w/ Bonus Room	2733
Villa Verona	2244
Villa Verona w/ Bonus Room	2594
Cyprus	2512
San Clemente	2772
Springfield	2766
Pine Lakes	2802
Pine Lakes w/ Bonus Room	3230
Villa Tuscany	2812
Dogwood	2886
Pachino	3398
Paradise	2863

You are invited to call
our office for current
pricing on any of our homes

02/01/19 * 7x16x17

PINE LAKES ESTATES CUSTOM HOME FEATURES

EXTERIOR

- Hardie plank fiber cement siding and trim
- Low maintenance aluminum and vinyl fascia
- Brick accents (Per Plan)
- Raised panel or louvered vinyl shutters
- Self-sealing 30 year "Architectural" fiberglass shingles
- (1) continuous ridge vent and ventilated soffits
- Low-E white vinyl single hung windows with insulated double pane glass and screens
- White vinyl insulated sliding patio doors with screen (Per Plan)
- Front entry door (Per Plan) (\$3,000 Allowance)
- Schlage or Kwikset handle set lock on front door
- Raised panel steel garage doors
- Raised monolithic slab concrete foundation
- Concrete driveway to street with shell finish (1,500 sq.ft. Allowance)
- Decorative mailbox at curb
- 14'x10' concrete patio or as per plan
- Professional landscape package with irrigation (\$10,000 Allowance)
- Upgraded lot prep allowance (\$5,000 Allowance)

INTERIOR

- Ceiling heights are 9' high on the first floor and 8' high on the second floor unless otherwise noted on the plans
- Main living areas to have volume ceilings (Per Plan)
- Smooth finish on ceilings
- Rounded sheetrock corners
- Latex semi-gloss finish paint on interior trim
- Latex flat finish paint on all interior walls
- Smooth 8" tall hollow core interior doors (Per Plan)
- 3/4" door casing and 7/4" baseboard
- 5/4" 1-piece crown molding in main living areas
- Flat panel maple cabinets with 42" upper wall cabinets (\$10,000.00 Allowance)
- Granite countertops in kitchen
- Ceramic tile backsplash in kitchen (\$1,200 Allowance including materials and installation)
- Granite countertop in master bath with 4" granite backsplash
- Cultured marble vanity tops with bullnose edging in guest baths
- Ceramic tile or hardwood flooring in the main living areas
- Ceramic tile floors in all baths and laundry room
- Durable carpet with 8 lb pad in all bedrooms, lofts, bonus rooms and stairs
- 52"h 1/4" plate glass mirrors in owners bath

- 42"h 1/4" plate glass mirrors in guest baths
- Brushed nickel levered door handles
- White melamine shelves in master closet and pantry
- Ventilated vinyl coated wire shelving in all other closets
- Garage walls to be smooth finished sheetrock, painted with baseboard trim
- Washer and dryer connections

PLUMBING

- Decorative 8" spread washerless bath faucets
- Walk-in tile shower in master bath (Per Plan)
- Glass door at master bath shower (Per Plan)
- Fiberglass garden tub in master bath with ceramic tile deck and skirt (Per Plan)
- Fiberglass tub/ shower base with ceramic tile walls in guest baths
- Water saving comfort height toilets with elongated bowl and soft close lid
- 8" deep stainless steel kitchen sink with stainless steel single handle faucet
- Water line for ice maker
- 50 gallon natural gas water heater
- (2) exterior hose bibs

APPLIANCES

- \$5,000 Allowance for all appliances and installation

HEATING, AIR CONDITIONING AND VENTILATION

- 14 SEER natural gas HVAC system with programmable thermostat professionally sized for each home
- Bathroom exhaust fans vented to the outside
- Dryer vent to the outside

ELECTRICAL

- 110 / 220V 200 Amp service with 200 Amp breaker panel box located in garage
- Garage door opener(s) with (2) remotes
- Smoke and carbon monoxide detectors per local building code
- (2) outdoor waterproof receptacles
- Ground fault circuit interrupter on designated kitchen, bath and outside electrical outlets
- Ceiling fan pre-wire in great room, bonus room (if applicable) and all bedrooms
- (2) phone jacks
- (4) Cable jacks
- (1) floor outlet
- Decorative lighting/ceiling fan package

(\$3,500 Allowance)

- (25) LED recessed can lights with trim

BUILDER FEATURES

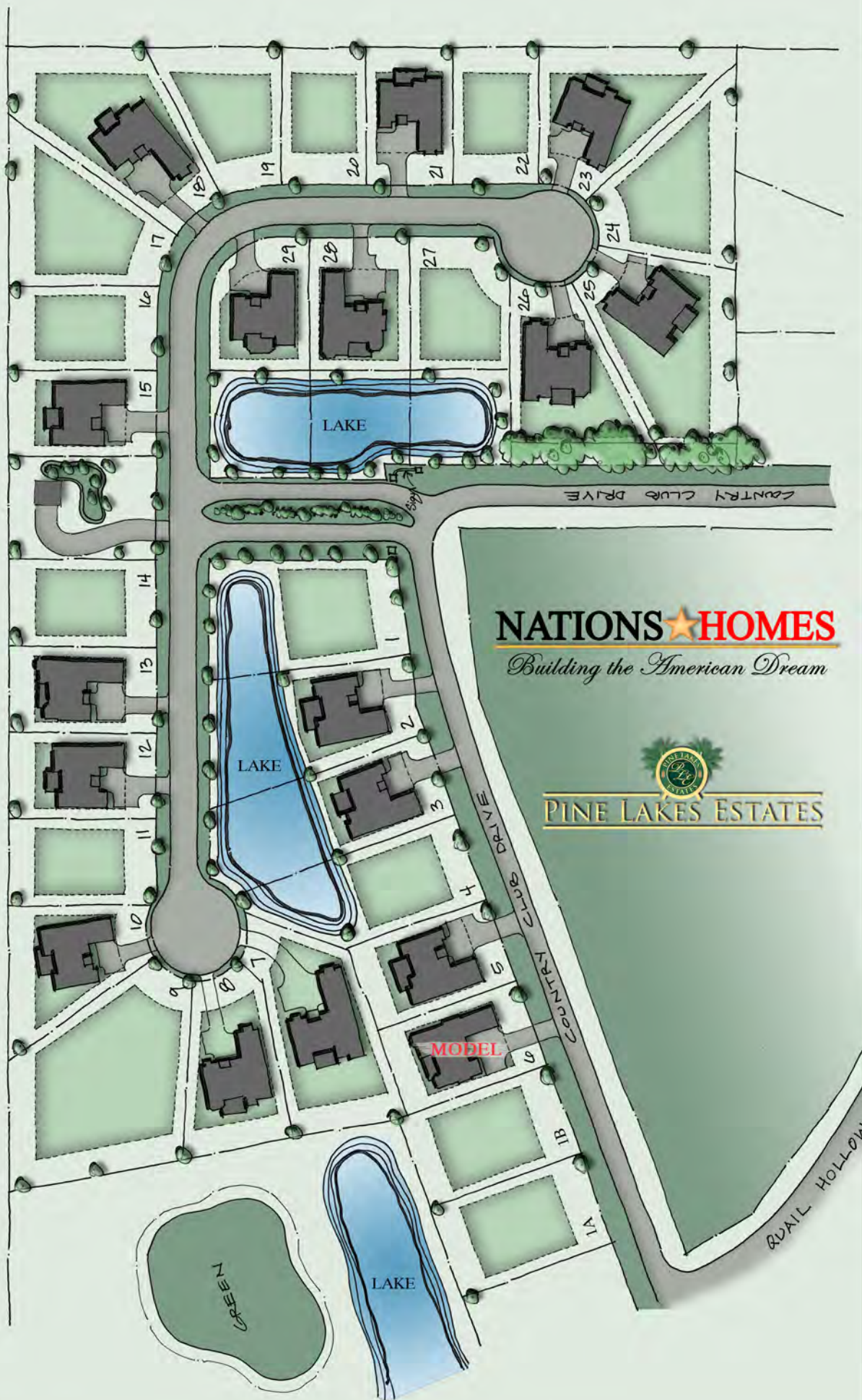
- Homeowners manual
- Termite treatment
- Pre-construction orientation with job superintendent
- Pre-drywall walk through with job superintendent
- Pre-occupancy walk through with job superintendent
- 8 year limited residential warranty (RWC) provided with each home

ALLOWANCES

- Front Door \$3,000
- Cabinets \$10,000
- Appliances \$5,000
- Kitchen Backsplash \$1200 (including materials and installation)
- Lighting/ceiling fans \$3,500
- Concrete driveway 1,500 sq.ft.
- Landscaping / irrigation \$10,000

Subject to change without notice. All options may not be available on all plans. Please consult your sales agent for plan specific options.

10/01/18



NATIONS★HOMES
Building the American Dream


PINE LAKES ESTATES

RAIL HOLLOW

THE MARION

3 BEDROOMS, 2 BATHS

O.D. 45'x67'

First Floor Heated 1,800 sq. ft.

Bonus Room Heated 275 sq. ft.

Total Heated 2,075 sq. ft.

Garage 450 sq. ft.

Covered Entrance 32 sq. ft.

Screened Porch 113 sq. ft.

Total 2,670 sq. ft.

Patio 140 sq. ft.

* Photos may show features not included in base price. All dimensions and areas are approximate.

* Conceptual Design - Final design subject to formal Architectural Review Committee Approval



First Floor Plan

Copyright 2010 Nations Homes LLC

Bonus Room Floor Plan



* OPTIONAL BRICK AND METAL ACCENTS ON FRONT ELEVATION

THE BROOKSTONE



3 BEDROOMS, 2 BATHS

O.D. 50'x63'

First Floor Heated	1,813 sq. ft.
Bonus Room Heated	391 sq. ft.
Total Heated	2,204 sq. ft.
Garage	476 sq. ft.
Covered Entrance	30 sq. ft.
Total	2,725 sq. ft.
Patio	140 sq. ft.

* Photos may show features not included in base price. All dimensions and areas are approximate.

* Conceptual Design - Final design subject to formal Architectural Review Committee Approval



THE INVERNESS



Walk up Storage/
Optional Bonus Room Floor Plan

* Conceptual Design - Final design subject to formal Architectural Review Committee Approval

3 BEDROOMS, 2 BATHS O. D. 53'-8" x 66'-2"

Heated Area..... 2000 SQ FT.
Opt. Bonus Room 337 SQ FT.
Total Heated 2,337 SQ FT.

Garage..... 458 SQ FT.
Entry..... 62 SQ FT.
Total Area 2,857 SQ FT.

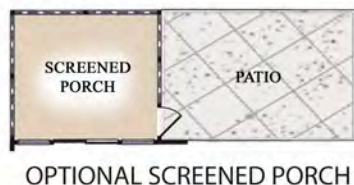
Patio 204 SQ FT.

*Photos may show features not included in base price. All dimensions and areas are approximate.



NATIONS★HOMES II
Building the American Dream

THE MYRTLE



Walk up Storage/ Optional Bonus Room Floor Plan

O. D. 50'-0" x 76'-8"

MYRTLE II

2 Bedrooms, 2 Baths

Heated Area.....	2,040 SQ. FT.
Opt. Bonus Room.....	275 SQ. FT.
Total Heated.....	2,315 SQ. FT.
Garage.....	452 SQ. FT.
Entry.....	24 SQ. FT.
Total Covered Area.....	2,851 SQ. FT.
Patio.....	372 SQ. FT.

* Photos may show features not included in base price.

All dimensions and areas are approximate.

* Conceptual Design - Final design subject to formal Architectural Review Committee Approval



Copyright 2010 Nations Homes LLC



NATIONS★HOMES II
Building the American Dream

THE GEORGETOWN



Second Floor Plan



First Floor Plan

* Conceptual Design - Final design subject to formal Architectural Review Committee Approval



* OPTIONAL BRICK AND METAL ACCENTS ON FRONT ELEVATION

4 BEDROOMS, 2.5 BATHS

O.D. 40'x67'

First Floor Heated	1,352 sq. ft.
Second Floor Heated	1,136 sq. ft.
Total Heated	2,488 sq. ft.
Garage	557 sq. ft.
Covered Entrance	53 sq. ft.
Screened Porch	137 sq. ft.
Total	3,235 sq. ft.
Patio	132 sq. ft.
Deck	251 sq. ft.

* Photos may show features not included in base price. All dimensions and areas are approximate.

MANCHESTER

3 BEDROOMS, 2.5 BATHS
O.D. 60'x78'

First Floor Heated 2,373 sq. ft.
Opt. Bonus Room Heated 360 sq. ft.

Total Heated 2,733 sq. ft.

Garage 583 sq. ft.
Covered Veranda 210 sq. ft.
Covered Entrance 193 sq. ft.

Total 3,719 sq. ft.

* Photos may show features not included in base price. All dimensions and areas are approximate.

* Conceptual Design - Final design subject to formal Architectural Review Committee Approval



Optional Bonus Room Floor Plan



First Floor Plan



* OPTIONAL BRICK AND METAL ACCENTS ON FRONT ELEVATION

NATIONS★HOMES II
Building the American Dream

VILLA VERONA

3 BEDROOMS, 3 BATHS O.D. 50'x85'

First Floor Heated	2,244 sq. ft.
Opt. Bonus Room	350 sq. ft.
Total Heated	2,594 sq. ft.
Garage	512 sq. ft.
Covered Entrance	58 sq. ft.
Covered Lanai	350 sq. ft.
Total	3,514 sq. ft.
Opt. Courtyard	425 sq. ft.

* Photos may show features not included in base price. All dimensions and areas are approximate.

* Conceptual Design - Final design subject to formal Architectural Review Committee Approval



Walk up Storage/
Optional Bonus Room Floor Plan



* OPTIONAL STUCCO AND STONE ACCENTS
ON FRONT ELEVATION

THE CYPRUS



3 BEDROOMS, 2.5 BATHS O.D. 61'x72'

First Floor Heated	2,512 sq. ft.
Total Heated	2,512 sq. ft.
Garage	478 sq. ft.
Covered Lanai	234 sq. ft.
Covered Entrance	87 sq. ft.
Total	3,311 sq. ft.

* Photos may show features not included in base price. All dimensions and areas are approximate.

* Conceptual Design - Final design subject to formal Architectural Review Committee Approval

* OPTIONAL METAL ROOF WITH
OPTIONAL STUCCO AND STONE ACCENTS
ON FRONT ELEVATION

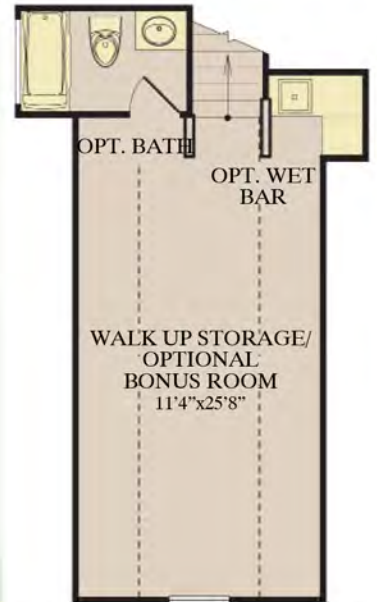


NATIONS★HOMES II
Building the American Dream

THE SAN CLEMENTE



First Floor Plan



Walk up Storage/
Optional Bonus Room
Floor Plan

* Conceptual Design - Final design subject to formal Architectural Review Committee Approval

3 BEDROOMS PLUS DEN 2-1/2 BATHS

O. D. 65'-5" x 73'-5"

Main Floor Heated Area.....2,772 SQ FT.
Opt. Bonus Room.....337 SQ FT.
Covered Lanai.....280 SQ FT.
Garage.....612 SQ FT.
Entry.....93 SQ FT.
Total Area.....4,094 SQ FT.

Patio.....350 SQ FT.

*Photos may show features not included in base price. All dimensions and areas are approximate.

* OPTIONAL STONE AND STUCCO ACCENTS ON FRONT ELEVATION



NATIONS★HOMES II
Building the American Dream

SPRINGFIELD



First Floor Plan



Second Floor Plan

* Conceptual Design - Final design subject to formal Architectural Review Committee Approval

4 BEDROOMS, 3.5 BATHS
O.D. 69'x54'

First Floor Heated	1,485 sq. ft.
Second Floor Heated	1,281 sq. ft.
Total Heated	2,766 sq. ft.
Garage	616 sq. ft.
Covered Veranda	224 sq. ft.
Covered Porch	111 sq. ft.
Total	3,717 sq. ft.
Patio	228 sq. ft.

* Photos may show features not included in base price. All dimensions and areas are approximate.

* OPTIONAL SHAKE AND METAL ACCENTS ON FRONT ELEVATION WITH OPTIONAL DECORATIVE BRACKETS AND GARAGE TRELLIS



NATIONS★HOMES II
Building the American Dream

PINE LAKE



* Conceptual Design - Final design subject to formal Architectural Review Committee Approval

Walk up Storage/
Optional Bonus Room Floor Plan

4 BEDROOMS, 4 BATHS

Heated Main Floor	2,802 sq. ft.
Opt. Bonus Room	428 sq. ft.
Total Heated	3,230 sq. ft.
Garage	673 sq. ft.
Covered Entry	74 sq. ft.
Screened Lanai	325 sq. ft.
Total Under Roof	4,302 sq. ft.
Patio	230 sq. ft.

* Photos may show features not included in base price. All dimensions and areas are approximate.

THE TUSCANY



First Floor Plan

3 BEDROOMS, 2.5 BATHS
O.D. 83'x53'

First Floor Heated 2,577 sq. ft.
Opt. Bonus Room Heated 476 sq. ft.

Total Heated 3,053 sq. ft.

Garage 549 sq. ft.
Covered Loggia 306 sq. ft.
Covered Entrance 72 sq. ft.

Total 3,980 sq. ft.

* Photos may show features not included in base price. All dimensions and areas are approximate.

* Conceptual Design - Final design subject to formal Architectural Review Committee Approval

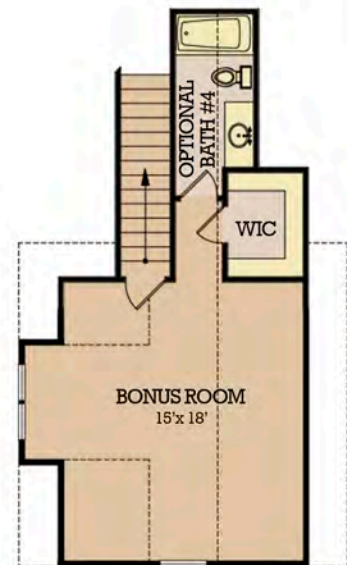


Optional Bonus Room Floor Plan



* OPTIONAL STUCCO AND BRICK ACCENTS ON FRONT ELEVATION

DOGWOOD



* Conceptual Design - Final design subject to formal Architectural Review Committee Approval

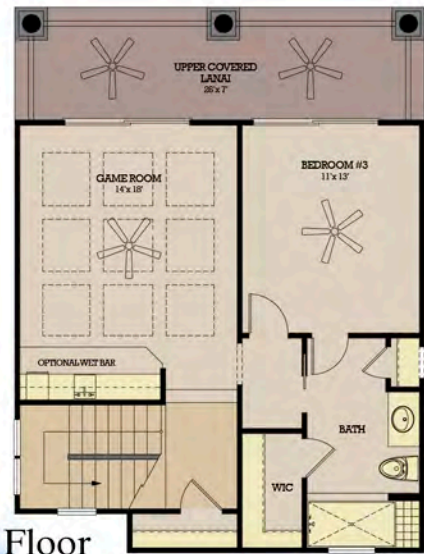
4 BEDROOMS, 4.5 BATHS	
O.D. 56'x74'	
First Floor Heated	2,410 sq. ft.
Bonus Room Heated	476 sq. ft.
Total Heated	2,886 sq. ft.
Garage	448 sq. ft.
Screened Porch	209 sq. ft.
Covered Entrance	38 sq. ft.
Total	3,581 sq. ft.



THE PACHINO



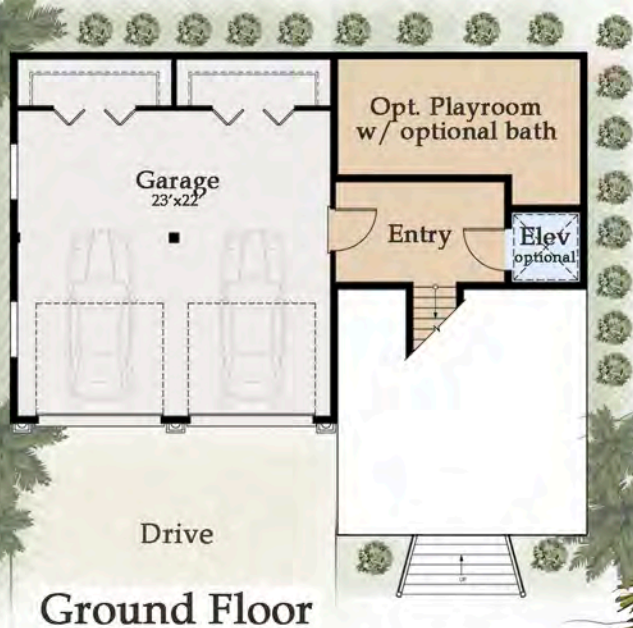
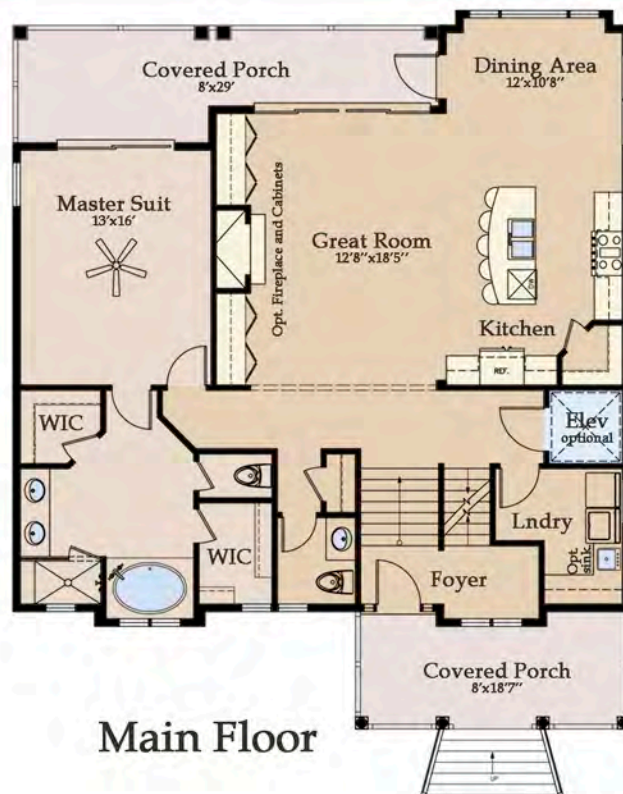
3 BEDROOMS, 4 BATHS	
O.D. 63'x95'	
First Floor Heated	2,752 sq. ft.
Second Floor Heated	646 sq. ft.
Total Heated	3,398 sq. ft.
Garage	574 sq. ft.
Opt. Screened Lanai	286 sq. ft.
Entry Porch	67 sq. ft.
Upper Cov.Lanai	191 sq. ft.
Total	4,516 sq. ft.



* Photos may show features not included in base price. All dimensions and areas are approximate.
 * Conceptual Design - Final design subject to formal Architectural Review Committee Approval



PARADISE



- * Photos may show features not included in base price.
- All dimensions and areas are approximate.
- * Conceptual Design - Final design subject to formal Architectural Review Committee Approval

AREAS	
Main Floor Heated	1,508 sf
Top Floor Heated	1,159 sf
Ground Floor Heated	104 sf
Total Heated	2,771 sf
Main Level Covered Front Porch	136 sf
Main Level Covered Rear Deck	192 sf
Top Floor Covered Porch	120 sf
Ground Level Garage and Storage	1,150 sf
Total Unheated	1,478 sf
Total Under Roof	4,249 sf



* OPTIONAL METAL ROOF WITH OPTIONAL SHAKE, STONE AND STUCCO ACCENTS ON FRONT ELEVATION

NATIONS★HOMES II
Building the American Dream