

Ocean Village lot 15 - JASMINE

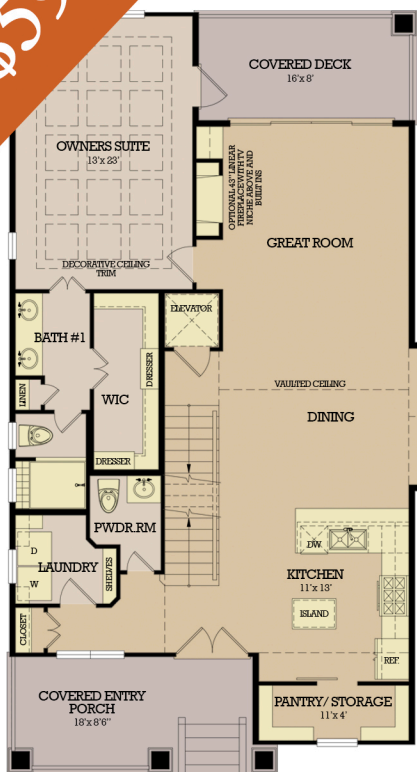


Just Steps to the Beach!

\$597,000



PRICES, PLANS AND ELEVATIONS ARE SUBJECTS TO CHANGE WITHOUT PRIOR NOTICE. ALL PLANS ARE UNDER NATIONS HOMES COPYRIGHT, AND ARE PROPERTY OF NATIONS HOMES

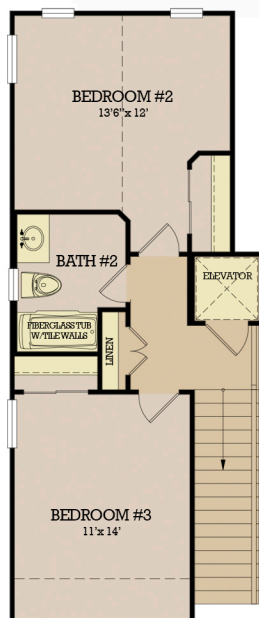


Main Level Floor Plan

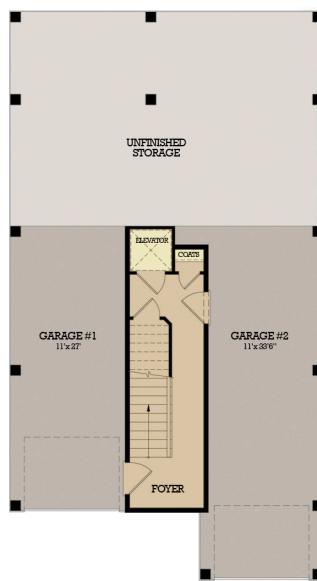
3 BEDROOMS WITH LOFT, 3 BATHS
O.D. 30'x56'

Ground Floor Heated	210 sq. ft.
Main Floor Heated	1,395 sq. ft.
Upper Floor Heated	513 sq. ft.
Total Heated	2,118 sq. ft.
Covered Entry Porch	151 sq. ft.
Garage	665 sq. ft.
Unfinished Storage	630 sq. ft.
Covered Deck	124 sq. ft.
Total	3,688 sq. ft.

* Photos may show features not included in base price. All dimensions and areas are approximate. Prices subject to change without notice.



Upper Level Floor Plan



Ground Level Floor Plan



Great Contemporary Craftsman style single family homes with hardiplank siding, shake and metal accents. Open concept plan with granite countertops, maple cabinets, stainless steel appliances, vaulted ceilings and beautiful landscaping with irrigation. 3 bedrooms / 2.5 baths with included upgrades such as elevator, fireplace with built-in cabinets, decorative ceiling trim and wainscoting. 2,118 hsf. Multiple options available to customize your own home. 8 year extended home warranty.

Custom Construction by:

NATIONS★HOMES II
Building the American Dream

traci miles
miles beyond

cell 843.997.8891
email tsmiles@tracimiles.com
www.tracimiles.com

Century 21
BOLING & ASSOCIATES, INC.