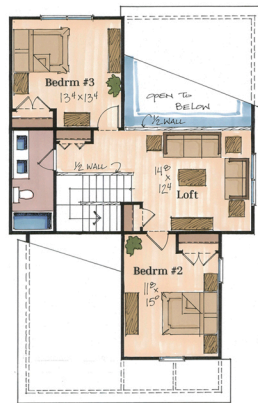
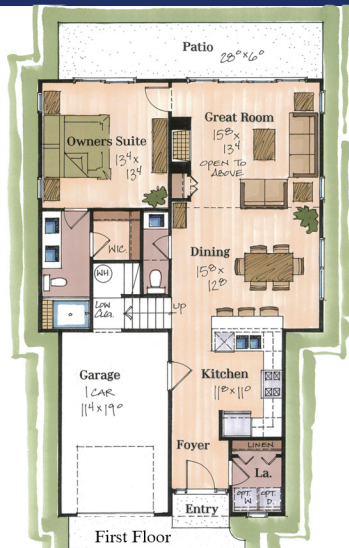
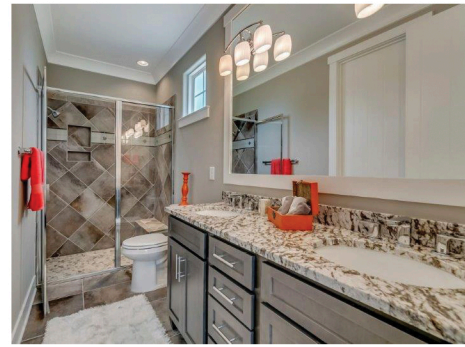
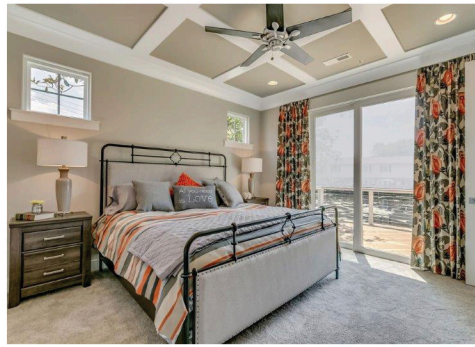


67th Ave.N., Myrtle Beach - PALM



Just Steps to the Beach!

\$321,875
\$340,875 FURNISHED
SOLD WITH 9 MONTHS LEASE BACK



3 BEDROOMS, 2.5 BATHS
 O.D. 52'x30'

First Floor Heated	1,017 sq. ft.
Second Floor Heated	758 sq. ft.
Total Heated	1,775 sq. ft.
Garage	215 sq. ft.
Concrete Patio	168 sq. ft.
Total	2,173 sq. ft.

* Photos may show features not included in base price. All dimensions and areas are approximate.



Great Contemporary Craftsman style single family homes with hardiplank siding and shake accents. Open concept plan with granite countertops, maple cabinets, stainless steel appliances, vaulted ceilings and beautiful landscaping with irrigation. 3 bedrooms / 2.5 baths, optional bonus room. 1500 hsf to over 2100 hsf. Multiple options available to customize your own home. 8 year extended home warranty.

Custom Construction by:

NATIONS★HOMES II
Building the American Dream

traci miles
 miles beyond

cell 843.997.8891

email tsmiles@tracimiles.com

www.tracimiles.com

Century 21
 BOLING & ASSOCIATES, INC.

